



UPSTREAM PETROLEUM ACTIVITIES

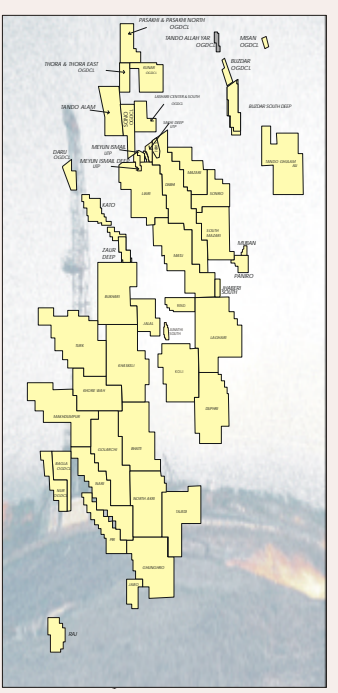
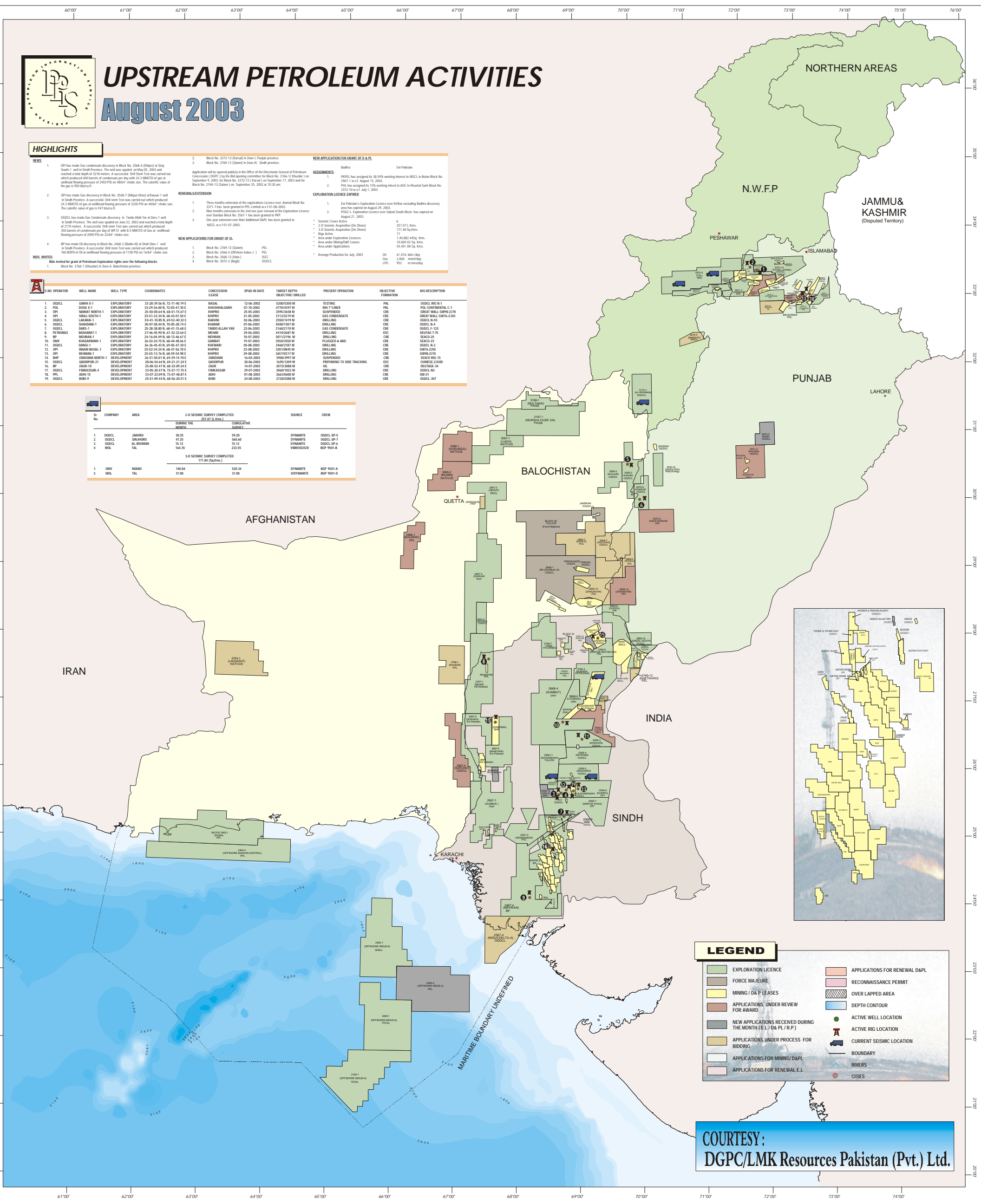
August 2003

HIGHLIGHTS

- NEWS**
- OGDC has made Gas condensate discovery in Block No. 2568-6 (Khan) at Sang South-1 well in Sindh Province. The well was spudded on May 05, 2003 and reached a total depth of 3278 meters. A successful DST stem Test was carried out which produced 400 barrels of condensate per day with 24.3 MMCFD of gas at wellhead flowing pressure of 2400 PSI on 40/64" choke size. The calorific value of the gas is 950 Btu/cu.ft.
 - OGDC has made Gas discovery in Block No. 2568-7 (Majra Khan) at Kauran-1 well in Sindh Province. A successful DST stem Test was carried out which produced 24.2 MMCFD of gas at wellhead flowing pressure of 1330 PSI on 40/64" choke size. The calorific value of gas is 947 Btu/cu.ft.
 - OGDC has made Gas Condensate discovery in Tando Allah Yar at Dars-1 well in Sindh Province. The well was spudded on June 22, 2003 and reached a total depth of 2730 meters. A successful DST stem Test was carried out which produced 300 barrels of condensate per day of API 51 with 8.5 MMCFD of Gas at wellhead flowing pressure of 2000 PSI on 32/64" choke size.
 - OGDC has made Oil discovery in Block No. 2568-10 (Badein III) at Shah Dars-1 well in Sindh Province. A successful DST stem Test was carried out which produced 160 BOPD of Oil at wellhead flowing pressure of 1100 PSI on 16/64" choke size.
- BIDS INVITED**
- Bids invited for grant of Petroleum Exploration rights over the following blocks:
- Block No. 2768-1 (Khushki) in Zone-II, Balochistan province.
- RENEWALS/EXTENSION**
- Three months extension of the exploration Licence over Ahamat Block No. 2371-7 has been granted to PPL Limited w.e.f 01-07-2003.
 - New months extension of the 2nd one year renewal of the Exploration Licence over Dambur Block No. 2561-1 has been granted to PKP. One year extension over Mar Additional (DAR) has been granted to MGCL w.e.f 01-07-2003.
- NEW APPLICATIONS FOR GRANT OF E.L.**
- Block No. 2768-13 (Salam) PPL
 - Block No. 2268-4 (Dhabeer Indus-7) PPL
 - Block No. 2568-11 (Riba) OGC
 - Block No. 3072-2 (Bagh) OGDC
- NEW APPLICATION FOR GRANT OF D & P.**
- Budra En Pakistan
- ASSIGNMENTS**
- PKPL has assigned its 30.5% working interest to MGCL in Baloch Block No. 2561-1 w.e.f August 15, 2003.
 - PKL has assigned its 10% working interest to AOC in Khushki Block No. 3372-10 w.e.f July 1, 2003.
- EXPLORATION LICENCE EXPIRED**
- En Pakistan's Exploration Licence over Kirther including Budra discovery area has expired on August 29, 2003.
 - OGDC's Exploration Licence over Sabar South Block has expired on August 21, 2003.
- SEISMIC CONVEYANCE**
- 2-D Seismic Acquisition (On-Shore) 251,071 Kms.
 - 2-D Seismic Acquisition (On-Shore) 171,84 Sq. Kms.
 - Ship Active 17
 - Area under Exploration Licences 1,40,882.44 Sq. Kms.
 - Area under Mining/D&P Leases 10,269.22 Sq. Kms.
 - Area under Applications 54,401.08 Sq. Kms.
- Average Production for July, 2003**
- | | |
|-----|------------------|
| Oil | 87,016 bbls/day |
| Gas | 2,860 mmscfd/day |
| LPG | 952 m tons/day |

S.NO	OPERATOR	WELL NAME	WELL TYPE	COORDINATES	CONCESSION ALIAS	SPUD-IN DATE	TARGET DEPTH OBJECTIVE (M/DRL)	PRESENT OPERATION	OBJECTIVE FORMATION	RIG DESCRIPTION
1.	OGDC	GARB X-1	EXPLORATORY	33-28-39.56 N, 72-11-40.19 E	BASAL	12-06-2002	5200/5300 M	TESTING	PAL	OGDC RIG No.1
2.	PKL	DOSRA X-1	EXPLORATORY	33-29-34.00 N, 72-05-47.30 E	KHUSHKI/BALACH	07-10-2002	4750/4950 M	RW FTLNER	PAL	PKL CONTINENTAL C-1
3.	OGP	SHARAH NORTH-1	EXPLORATORY	33-00-00.00 N, 68-41-15.01 E	KHIFRO	29-09-2003	3090/4000 M	SUSPENDED	CRE	GREAT WALL CW78-2/10
4.	OGP	SIRAL-SOUTH-1	EXPLORATORY	25-51-33.34 N, 68-43-01.50 E	KHIFRO	31-05-2003	3115/3219 M	GAS CONDENSATE	CRE	GREAT WALL CW78-2/10
5.	OGDC	LAKHANI-1	EXPLORATORY	33-41-10.86 N, 68-52-40.21 E	KHIFRO	02-08-2003	2950/4100 M	DRLING	CRE	OGDC R-55
6.	OGDC	SHAHWANI-1	EXPLORATORY	30-07-58.44 N, 70-05-28.74 E	KHIFRO	07-06-2003	4500/5000 M	DRLING	CRE	OGDC R-4
7.	OGDC	SARS-1	EXPLORATORY	29-38-38.00 N, 68-41-15.00 E	TANDO ALLAH YAR	22-08-2003	2140/2710 M	GAS CONDENSATE	CRE	OGDC R-125
8.	PETROBRAS	BASCHABAT-1	EXPLORATORY	27-48-46.90 N, 67-32-32.44 E	MENAB	29-06-2003	4410/2487 M	DRLING	EOC	DELTA 1.75
9.	BP	MENAB-1	EXPLORATORY	24-14-04.49 N, 68-13-46.67 E	MENAB	19-07-2003	3811/2196 M	DRLING	CRE	SEACO-25
10.	OMV	KHAKHARABAS-1	EXPLORATORY	26-52-24.71 N, 68-44-46.44 E	GAMBAT	19-07-2003	3550/3500 M	PLUGGED & ABD.	CRE	SEACO-23
11.	OGP	DANANG-1	EXPLORATORY	26-36-45.43 N, 68-05-47.30 E	GAMBAT	09-08-2003	3460/2787 M	DRLING	CRE	OGDC R-2
12.	OGP	INDUS BASAL-1	EXPLORATORY	25-52-34.24 N, 68-47-54.70 E	KHIFRO	22-08-2003	3201/4000 M	DRLING	CRE	QW78-2/10
13.	OGP	RESMAN-1	EXPLORATORY	25-55-13.74 N, 68-59-54.91 E	KHIFRO	29-08-2003	3457/3037 M	DRLING	CRE	QW78-2/10
14.	OGP	ZANGAMA NORTH-1	DEVELOPMENT	34-51-50.01 N, 69-39-19.70 E	ZANGAMA	14-04-2003	3700/2999 M	SUSPENDED	CRE	SEACO 980-15
15.	OGDC	GADHAPUR-21	DEVELOPMENT	28-06-54.84 N, 68-21-21.24 E	GADHAPUR	30-04-2003	1495/1209 M	PREPARING TO SIDE TRACKING	EOC	CHINESE L/250
16.	BP	ZANG-10	DEVELOPMENT	25-08-52.47 N, 68-33-09.24 E	ZANG	14-04-2003	2072/2088 M	ON	EOC	DELTA 34
17.	OGDC	FRANKSAR-4	DEVELOPMENT	33-05-20.47 N, 72-57-17.75 E	FRANKSAR	29-07-2003	3040/1022 M	DRLING	CRE	OGDC R3
18.	PPL	ADHI-10	DEVELOPMENT	33-07-23.09 N, 72-07-48.07 E	ADHI	01-08-2003	2640/0860 M	DRLING	CRE	GM-51
19.	OGDC	BOBI-9	DEVELOPMENT	25-51-09.44 N, 68-54-20.51 E	BOBI	24-08-2003	2720/0388 M	DRLING	CRE	OGDC-307

Sr.	COMPANY	AREA	2-D SEISMIC SURVEY COMPLETED		SOURCE	CREW
			DURING THE MONTH	CUMULATIVE SURVEY		
1.	OGDC	JAMRO	30.35	99.09	DYNAMITE	OGDC SP-5
2.	OGDC	JAMRO	47.25	549.60	DYNAMITE	OGDC SP-7
3.	OGDC	AL-REHMAN	15.12	15.12	DYNAMITE	OGDC SP-6
4.	MOL	TAL	144.35	233.95	VIBROSEIS	BP 9501-B
3-D SEISMIC SURVEY COMPLETED						
1.	OMV	MIANO	140.84	520.34	DYNAMITE	BP 9501-A
2.	MOL	TAL	31.00	31.00	VIBROSEIS	BP 9501-D



LEGEND

EXPLORATION LICENCE	APPLICATIONS FOR RENEWAL D&P
FORCE MAJEURE	RECONNAISSANCE PERMIT
MINING / D & P LEASES	OVER LAPPED AREA
APPLICATIONS UNDER REVIEW FOR AWARD	DEPTH CONTOUR
NEW APPLICATIONS RECEIVED DURING THE MONTH (E.L./D&P/R.P.)	ACTIVE WELL LOCATION
APPLICATIONS UNDER PROCESS FOR BIDDING	ACTIVE RIG LOCATION
APPLICATIONS FOR MINING/D&P	CURRENT SEISMIC LOCATION
APPLICATIONS FOR RENEWAL E.L.	BOUNDARY
	RIVERS
	CITIES

COURTESY:
DGPC/LMK Resources Pakistan (Pvt.) Ltd.